

**WARDS**  
**SEA KING**

**OUTBOARD  
MOTOR**

**PARTS CATALOG**

# **6 SPECIAL**

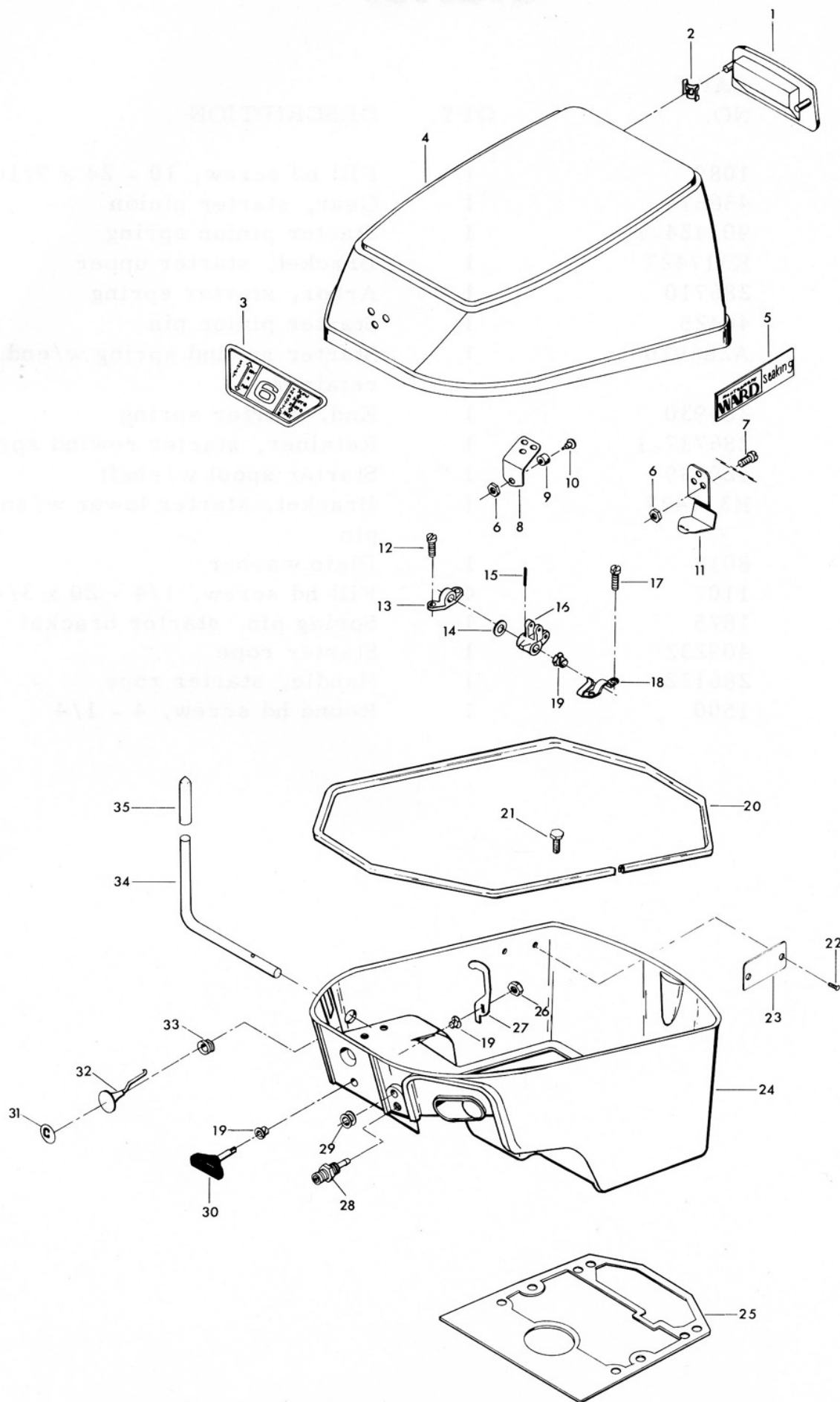
**B.I.A. CERTIFIED BRAKE H.P. AT 4,500 R.P.M.**

**MODEL  
VWB-27400**

Printed in U.S.A.

10/72

**SEA KING** - SOLD EXCLUSIVELY BY **MONTGOMERY WARD**

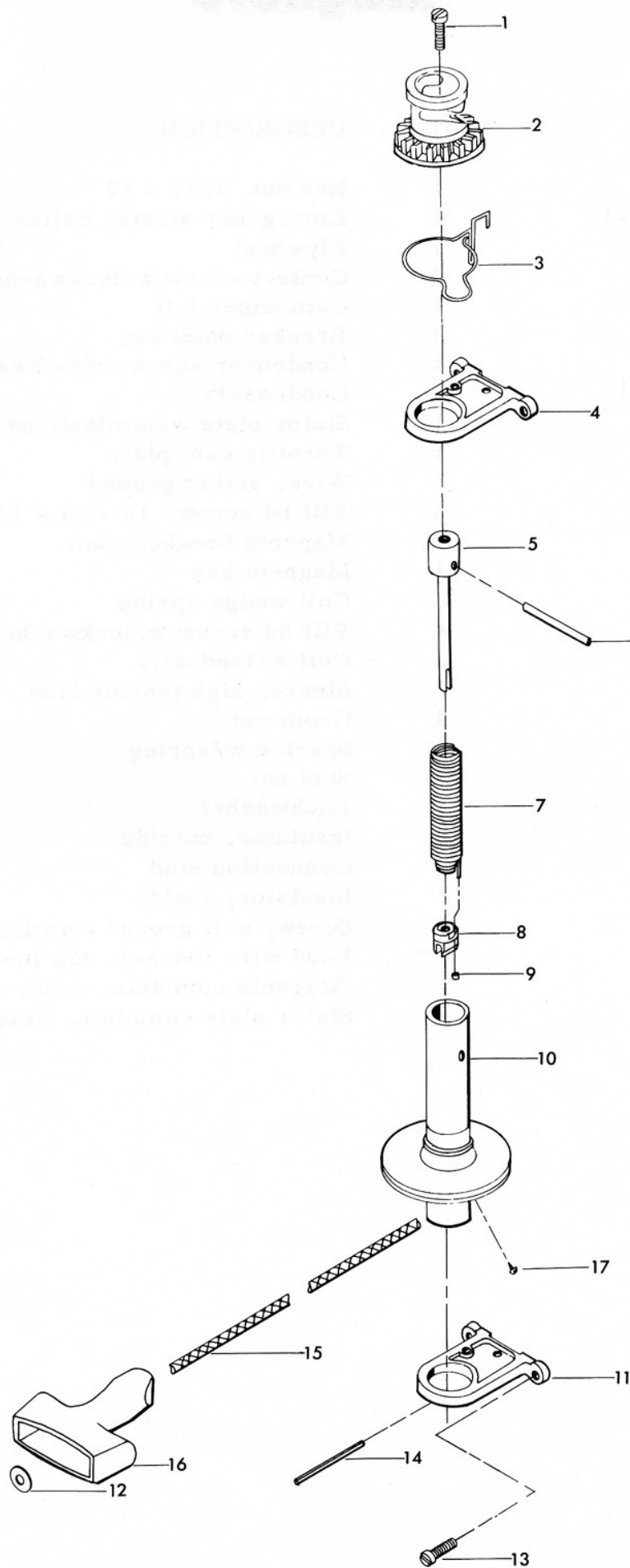


# Engine Cover and Support Plate

ILLUS. NO.	PART NO.	QTY.	DESCRIPTION
1	272269-1	1	Handle, tilt
2	9037	2	Fastener
3	470894	1	Indicator, speed control
4	S470712	1	Engine cover w/bracket and retainer
5	470392	2	Decal
6	7011	6	Elastic stop nut, 10 - 24
7	1475	6	Fill hd screw, 10 - 24 x 1/2
8	2A469774	1	Bracket, cover latch w/screws, nuts and rollers
9	92759	1	Roller
10	269316	1	Roller shaft
11	A469480	1	Retainer, engine cover w/screws and nuts
12	1574	2	Fill hd screw, 1/4 - 20 x 9/16
13	318818	1	Bearing
14	154415	1	Washer
15	8547	1	Spring pin
16	318876-1	1	Gear shift lever
17	1068	2	Fill hd screw, 10 - 24 x 7/16
18	318895	1	Spring shift detent
19	307818	3	Bearing
20	286756	1	Packing, support plate
21	1689	2	Hex cap screw, 1/4 - 20 x 1/2
22	1293	2	Drive screw, 2 x 3/16
23	A197395-1	1	Plate, identification w/screws
24	A459038	1	Support plate w/eyelet
25	318453-1	1	Gasket, leg mounting
26	7006	1	Stop nut, 5/16 - 18
27	286777	1	Cam, cover latch
28	197767-1	1	Bushing, fuel line
29	901504-1	1	Grommet
30	A286469	1	Knob, cover latch
31	458677	1	Insert, choke knob
32	A318503	1	Choke rod w/knob and insert
33	318504	1	Grommet, choke rod
34	459876	1	Handle, gear shift lever
35	459137	1	Grip

## NOTE

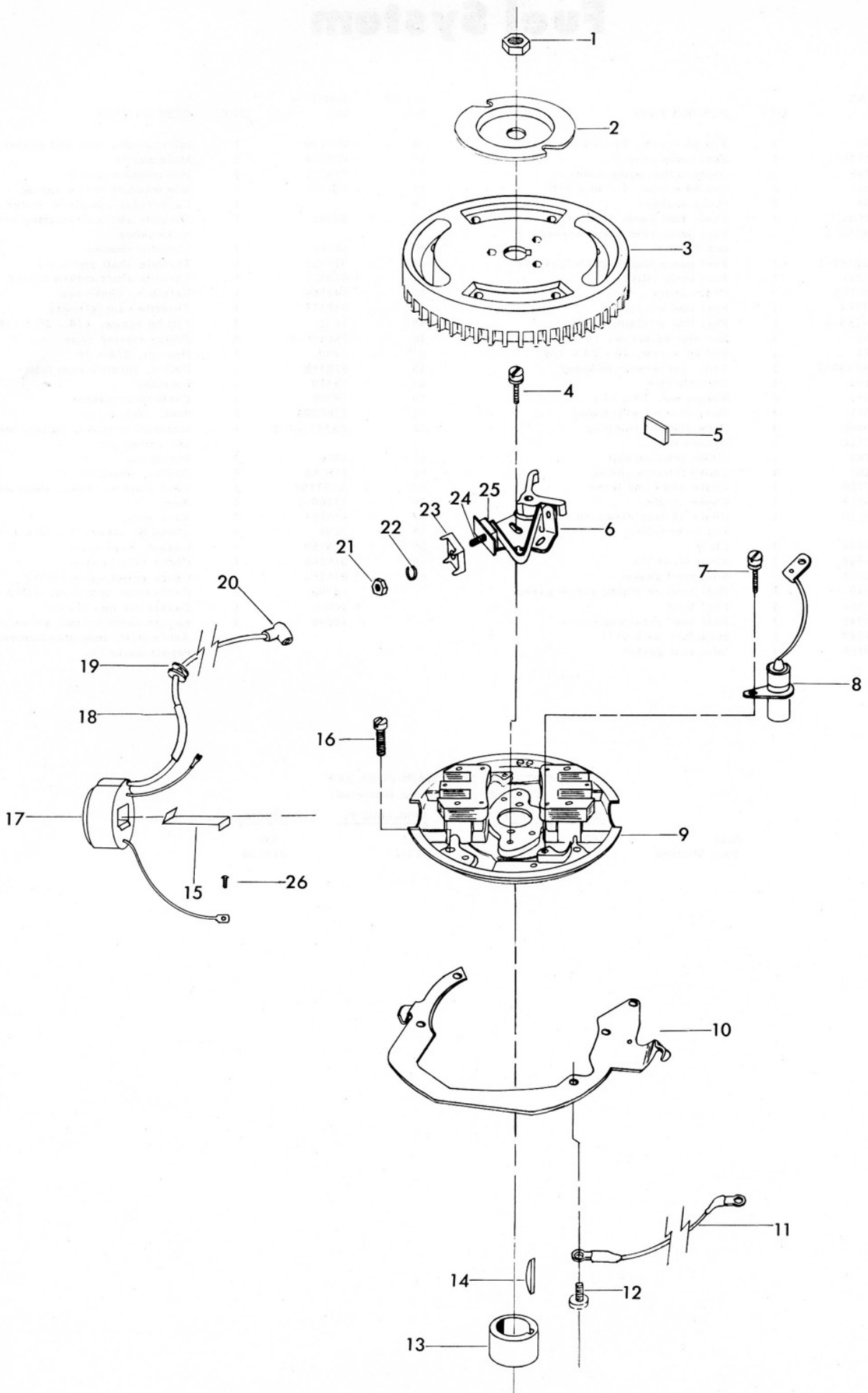
To obtain identification plate, order part number A197395-1. Order for identification plate must be accompanied by a notarized statement from the dealer, customer and statement from a law enforcement agency verifying that the plate is lost or damaged beyond repair. This statement must also include name and address of owner and model and serial number of motor.



# Starter

ILLUS. NO.	PART NO.	QTY.	DESCRIPTION
1	1089	1	Fill hd screw, 10 - 24 x 9/16
2	456674	1	Gear, starter pinion
3	901424-1	1	Starter pinion spring
4	K317427	1	Bracket, starter upper
5	286710	1	Arbor, starter spring
6	40425	1	Starter pinion pin
7	A286970	1	Starter rewind spring w/end and retainer
8	286930	1	End, starter spring
9	286737-1	1	Retainer, starter rewind spring
10	429239	1	Starter spool w/shaft
11	K317427	1	Bracket, starter lower w/spring pin
12	8018	1	Plain washer
13	1107	4	Fill hd screw, 1/4 - 20 x 3/4
14	1875	1	Spring pin, starter bracket
15	409232	1	Starter rope
16	286132	1	Handle, starter rope
17	1500	1	Round hd screw, 4 - 1/4

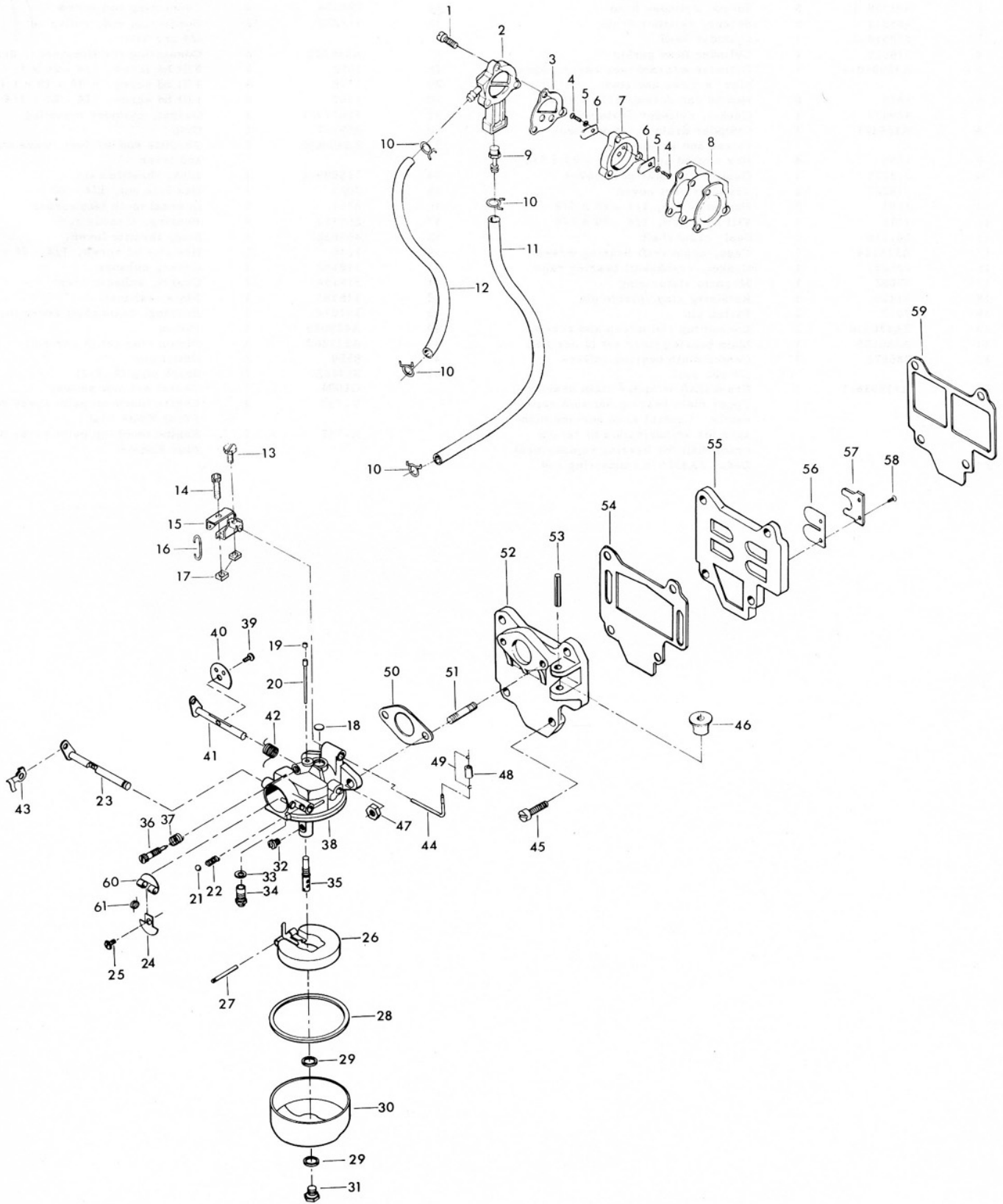
malaya



# Magneto

ILLUS. NO.	PART NO.	QTY.	DESCRIPTION
1	1352	1	Hex nut, 7/16 - 20
2	901456-1	1	Emergency starter collar
3	318097	1	Flywheel
4	12170	4	Contact screw w/lockwasher
5	12228	1	Cam wiper felt
6	12153	2	Breaker point set
7	12083	2	Condenser screw w/lockwasher
8	12181-1	2	Condenser
9	12343	1	Stator plate w/laminations
10	459192	1	Throttle cam plate
11	289664	1	Wire, stator ground
12	1075	4	Fill hd screw, 10 - 24 x 1/2
13	59002	1	Magneto breaker cam
14	54498	1	Magneto key
15	12146	2	Coil wedge spring
16	1090	4	Fill hd screw w/lockwasher, 10 - 24 x 9/16
17	A12231	2	Coil w/lead wire
18	12141	1	Sleeve, high tension lead
19	12088	4	Grommet
20	K750-1	2	Sparkie w/spring
21	12127	2	Stud nut
22	8055	2	Lockwasher
23	12128	2	Insulator, outside
24	12142	2	Connection stud
25	12129	2	Insulator, inside
26	12114	2	Screw, coil ground terminal
	12091	1	Lead wire marker, top (not shown)
		1	Magneto complete, order component parts
		1	Stator plate complete, order component parts

# Power Head



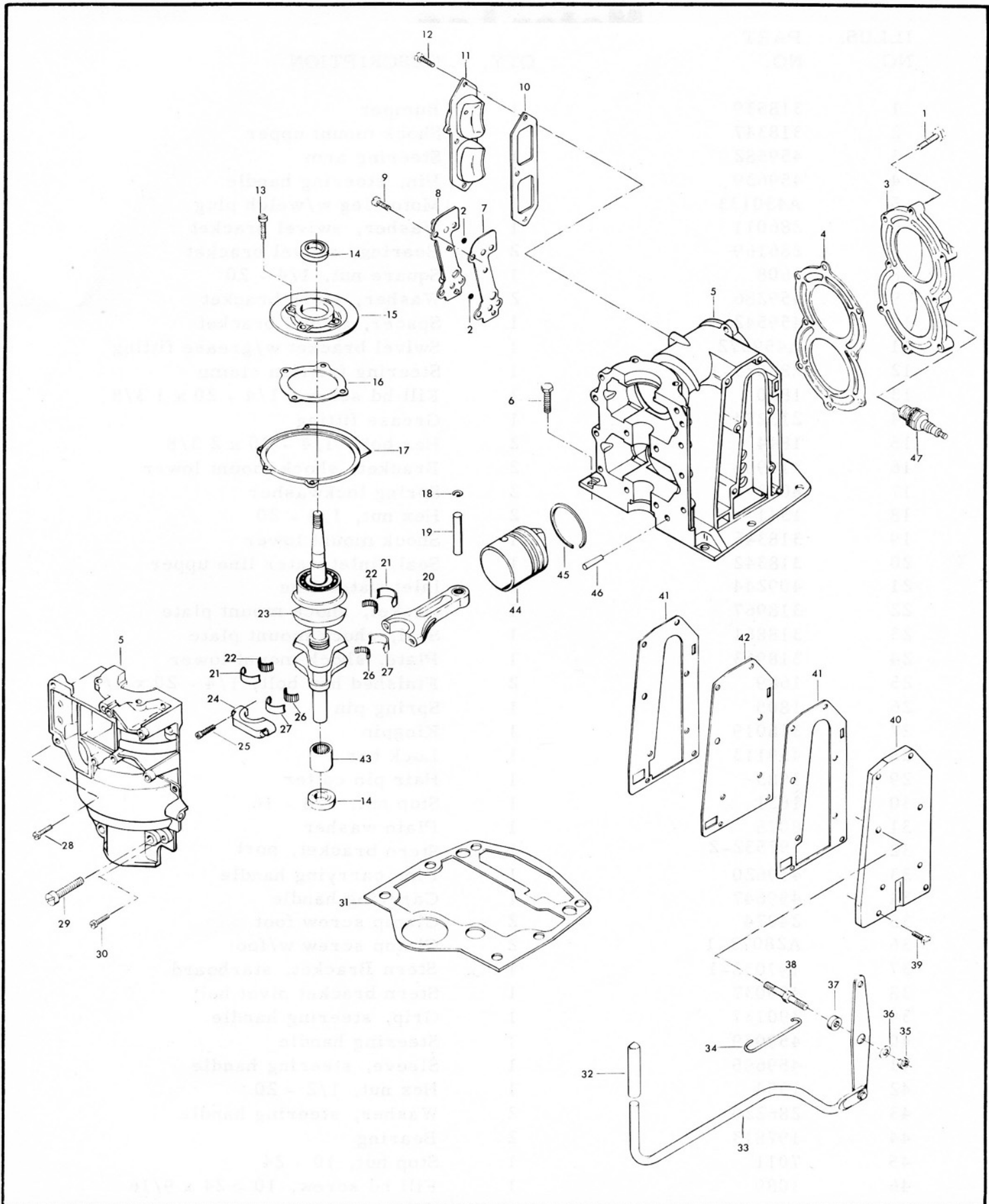


# Fuel System

PART NO.	QTY.	DESCRIPTION	ILLUS. NO.	PART NO.	QTY.	DESCRIPTION
1069	3	Fill hd screw, 10 - 24 x 1 1/16	34	* 010790	1	Inlet needle, seat and gasket
901746-1	1	Fuel pump cover	35	* 015722	1	Main nozzle
24748	1	Gasket, fuel pump cover	36	* 015520	1	Idle mixture screw
1286	2	Pan hd screw, 4 - 40 x 3/16	37	* 011103	1	Idle mixture screw spring
8003	2	Plain washer	38		1	Carburetor complete, order 429061
18160-1	2	Reed, fuel pump	39	* 08942	1	Throttle shutter retaining screw and lockwasher
A24757-3	1	Fuel pump reed plate w/reeds and screws	40	08502	1	Throttle shutter
2A24747-1	1	Fuel pump diaphragm w/gaskets	41	015718	1	Throttle shaft and lever
901811	1	Fuel pump filter	42	* 015526	1	Throttle shaft return spring
2706772	4	Hose clamp	43	341384	1	Retainer, choke rod
A71754	1	Fuel line w/clamps	44	318316	1	Throttle cam follower
A24754-1	1	Fuel line w/clamps	45	1201	4	Fill hd screw, 1/4 - 20 x 3/4
1558	1	Hex slot hd screw, 10 - 24 x 3/8	46	286435-3	1	Pulley starter rope
1834	1	Fill hd screw, 10 - 24 x 7/8	47	1490	2	Hex nut, 1/4 - 20
A286190-1	1	Arm, carburetor follower	48	318318	1	Roller, throttle cam follower
66193	1	Throttle link	49	78410	2	Retainer
1365	2	Square nut, 10 - 24	50	18906	1	Carburetor gasket
* 02531	1	Body channel welch plug	51	2788004	2	Stud, carburetor
* 010588	1	Body channel cup plug	52	2A341167-1	1	Manifold w/studs, pulley, washer and spring pin
016120	1	Bypass tube				Spring pin
04784	1	Choke friction ball	53	1876	1	Gasket, manifold
08805	1	Choke friction spring	54	318168	1	Reed plate w/reeds, stops and screws
015720	1	Choke shaft and lever	55	A387158	1	Reed
015367	1	Choke shutter	56	31160-1	2	Reed stop
010280	1	Choke shutter retaining screw and lockwasher	57	459161	2	Round hd screw, 6 - 32 x 1/4
			58	1298	4	Gasket, reed plate
013554	1	Float	59	318159	1	Choke relief valve
* 013944	1	Float lever pin	60	015368	1	Choke relief valve spring
015623	1	Fuel bowl gasket	61	016161	1	Carburetor complete, CO6A
02510	2	Fuel bowl retaining screw gasket		429061	1	Gasket set (not shown)
015366	1	Fuel bowl		* 10006	1	Repair parts kit (not shown)
013945	1	Fuel bowl retaining screw		10008	1	Asterisk (*) indicates contents of repair parts kit.
* 014540	1	Main fuel jet (.037)				
010165	1	Inlet seat gasket				

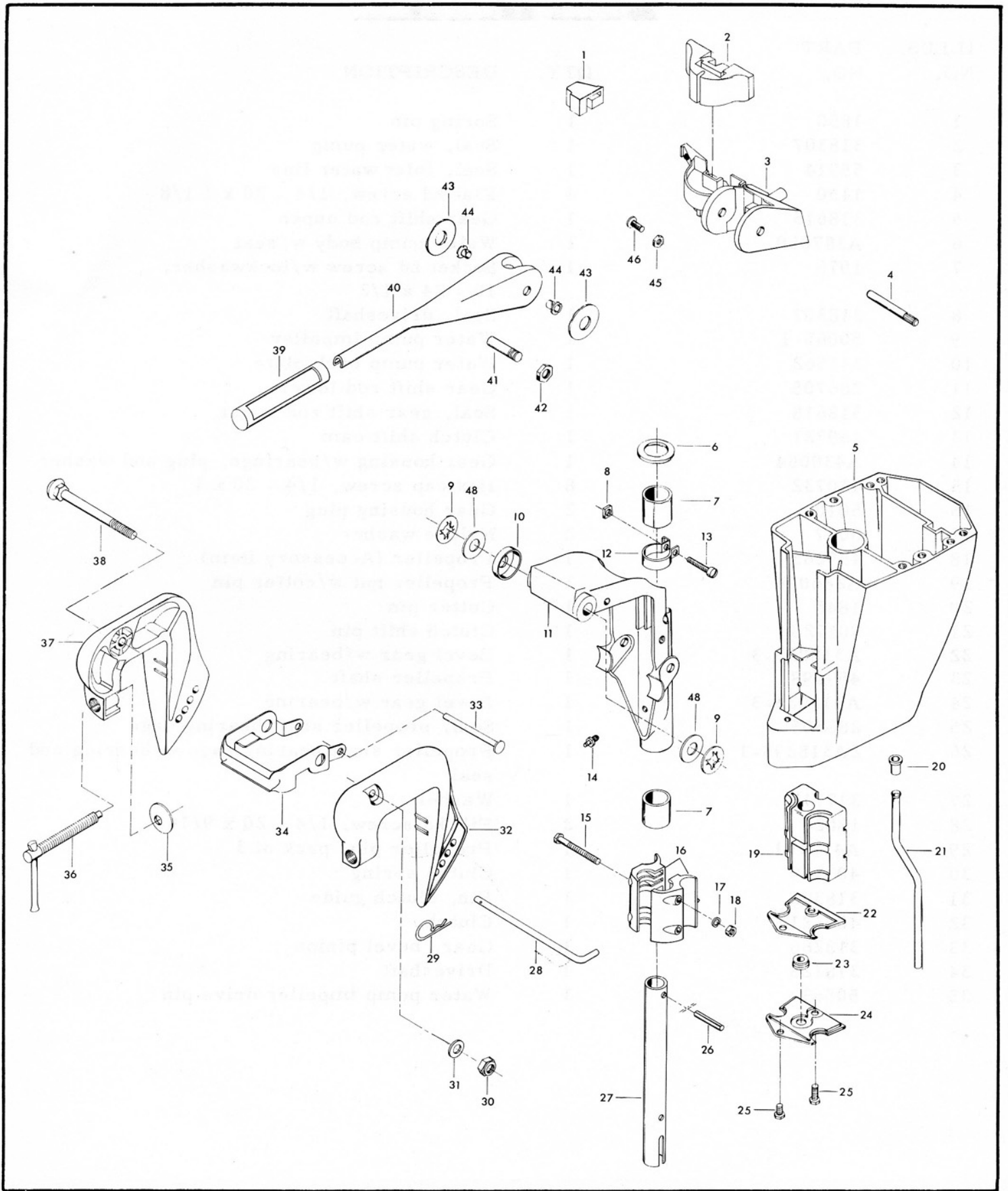
## OPTIONAL SIZE MAIN FUEL JET (Use Only At Altitudes Indicated)

	<u>Sea Level-3000 Ft.</u>	<u>3000-6000 Ft.</u>	<u>6000 and Up</u>
Size	.037	.035	.033
Part Number	014540	013627	013630



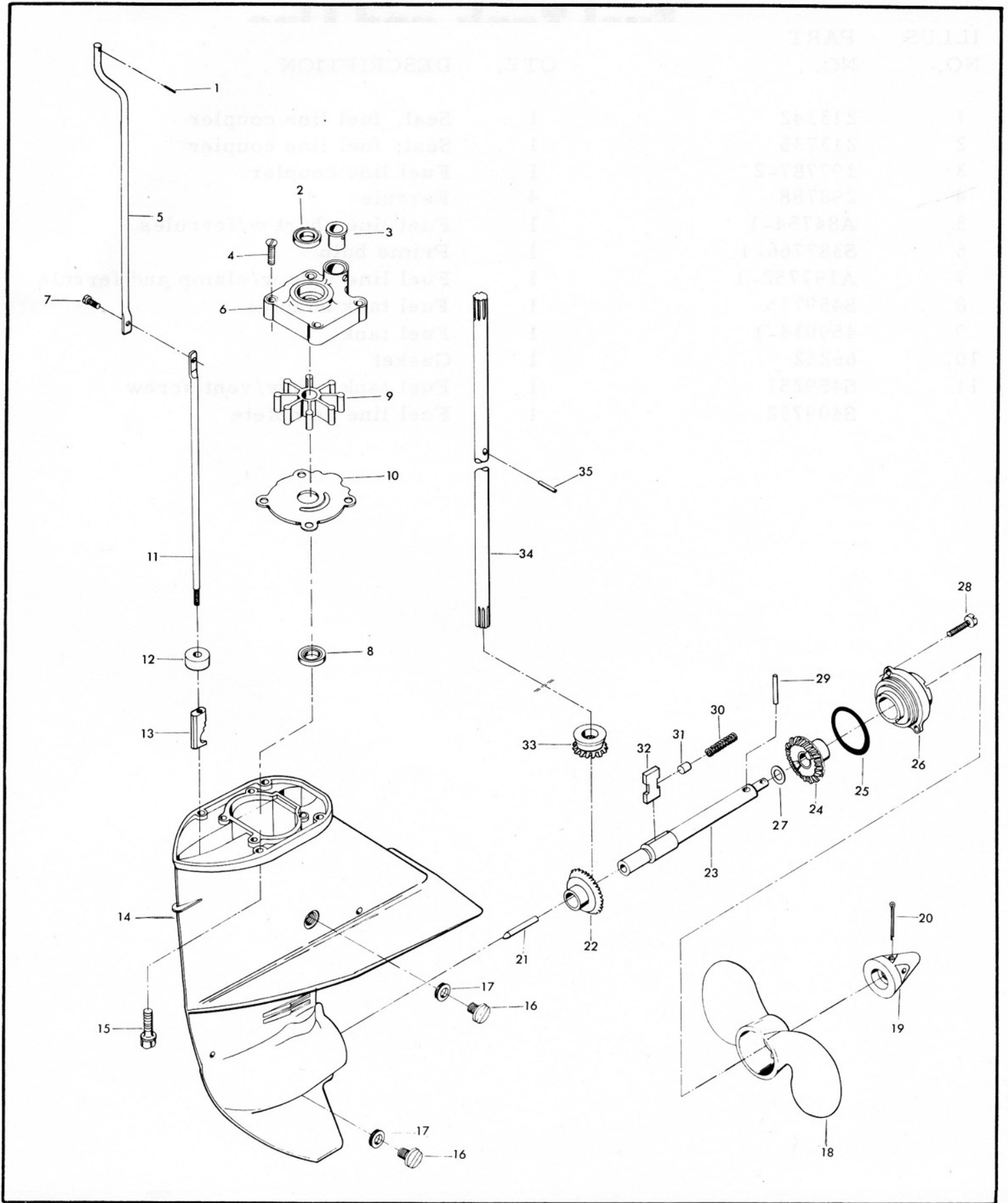
# Power Head

ILLUS. NO.	PART NO.	QTY.	DESCRIPTION	ILLUS. NO.	PART NO.	QTY.	DESCRIPTION
1	901938-1	8	Screw, cylinder head	25	286634	4	Connecting rod screw
2	429811	2	Screen, cylinder drain	26	318228	2	Connecting rod, roller set (24 per set)
3	318518-3	1	Cylinder head	27	A318229	2	Connecting rod liner set (2 per set)
4	318529	1	Cylinder head gasket	28	1672	2	Fill hd screw, 1/4 - 20 x 1
5	A429010-1	1	Cylinder w/crankcase cover, dowel pins, screws and stud	29	1798	4	Fill hd screw, 5/16 - 18 x 1 1/4
6	1823	6	Hex hd cap screw, 5/16 - 18 x 1	30	1107	6	Fill hd screw, 1/4 - 20 x 3/4
7	429472	1	Gasket, cylinder drain cover	31	318279-1	1	Gasket, cylinder mounting
8	A429471	1	Cylinder drain cover w/check valves and screens	32	459137	1	Grip
9	1239	4	Hex slot hd screw, 1/4 - 20 x 5/8	33	2A459688	1	Throttle rod w/rivet, wave washer and lever
10	318223	1	Gasket, transfer port cover	34	318509-2	1	Link, throttle cam
11	318222	1	Transfer port cover	35	7023	1	Hex lock nut, 1/4 - 20
12	1502	3	Hex hd screw, 1/4 - 20 x 5/8	36	8061	1	Internal tooth lockwasher
13	1111	4	Fill hd screw, 1/4 - 20 x 7/8	37	269319	1	Bearing, throttle rod
14	141118	2	Seal, crankshaft	38	459822	1	Stud, throttle lever
15	A318114	1	Cage, crankshaft bearing w/seal	39	1240	7	Hex slot hd screw, 1/4 - 20 x 7/8
16	286277	1	Gasket, crankshaft bearing cage	40	318152	1	Cover, exhaust
17	73082	1	Magneto stator ring	41	318154	2	Gasket, exhaust cover
18	31410	3	Retaining ring, piston pin	42	318151	1	Plate, exhaust
19	7017	2	Piston pin	43	341014	1	Bearing, crankshaft lower main
20	2A430016	2	Connecting rod w/cap and screws	44	A429015	2	Piston
21	A286655	1	Main bearing liner set (2 per set)	45	A317260	2	Piston ring set (3 per set)
22	286571	1	Center main bearing rollers (26 per set)	46	8559	2	Dowel pin
23	A318018-1	1	Crankshaft w/upper main bearing. Upper main bearing not sold separately. Contact area service manager for authorization to return crankshaft for bearing replacement. Order 2A430016 connecting rod	47	S174227	2	Spark plug (L-4-J)
					G1004	1	Gasket set (not shown)
					K-737	1	Engine touch-up paint spray bomb Frost White Flat
					K-747	1	Engine touch-up paint spray bomb Blue Enamel
24							



# Motor Leg

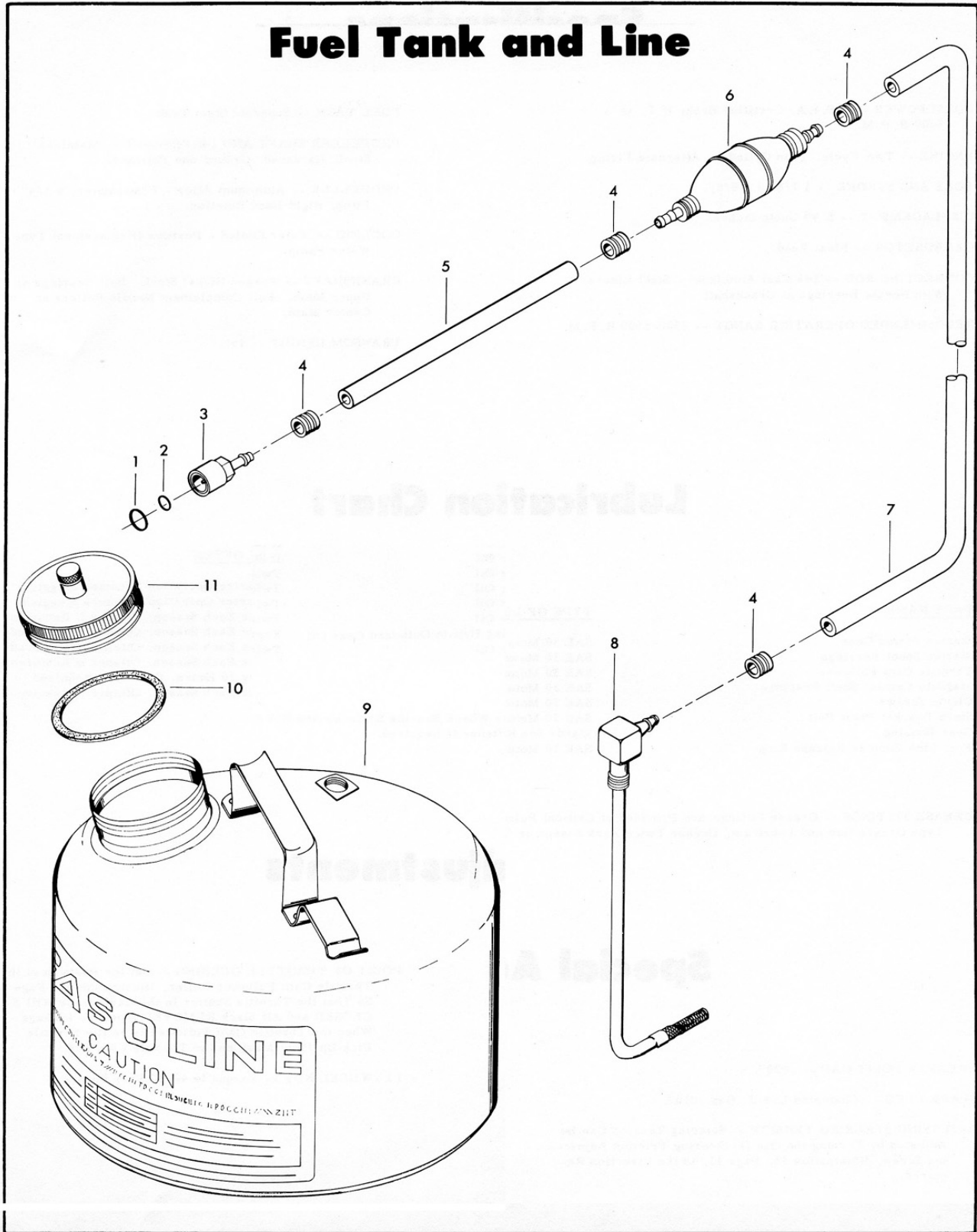
ILLUS. NO.	PART NO.	QTY.	DESCRIPTION
1	318539	1	Bumper
2	318347	1	Shock mount upper
3	459582	1	Steering arm
4	459639	1	Pin, steering handle
5	A430133	1	Motor leg w/welch plug
6	286011	1	Washer, swivel bracket
7	286169	2	Bearing, swivel bracket
8	1608	1	Square nut, 1/4 - 20
9	459286	2	Washer, stern bracket
10	459542	1	Spacer, swivel bracket
11	A459072	1	Swivel bracket w/grease fitting
12	286573-1	1	Steering friction clamp
13	1820	1	Fill hd screw, 1/4 - 20 x 1 3/8
14	213274	1	Grease fitting
15	1844	2	Hex bolt, 1/4 - 20 x 2 3/8
16	318956	2	Bracket, shock mount lower
17	8083	2	Spring lockwasher
18	1341	2	Hex nut, 1/4 - 20
19	318346	1	Shock mount lower
20	318342	1	Seal, inlet water line upper
21	409244	1	Inlet water line
22	318967	1	Gasket, shock mount plate
23	318861	1	Seal, shock mount plate
24	318963	1	Plate, shock mount lower
25	1689	2	Finished hex bolt, 1/4 - 20 x 1/2
26	1805	1	Spring pin
27	318019	1	Kingpin
28	459113	1	Lock bar
29	1985	1	Hair pin cotter
30	1631	1	Stop nut, 3/8 - 16
31	8075	1	Plain washer
32	197532-2	1	Stern bracket, port
33	459620	1	Pin, carrying handle
34	459647	1	Carrying handle
35	24074	2	Clamp screw foot
36	A28073-1	2	Clamp screw w/foot
37	197032-1	1	Stern Bracket, starboard
38	459037	1	Stern bracket pivot bolt
39	390137	1	Grip, steering handle
40	459079	1	Steering handle
41	459695	1	Sleeve, steering handle
42	1354	1	Hex nut, 1/2 - 20
43	286220	2	Washer, steering handle
44	197813	2	Bearing
45	7011	1	Stop nut, 10 - 24
46	1089	1	Fill hd screw, 10 - 24 x 9/16
47	1989	2	Plain washer



# Gear Housing

ILLUS. NO.	PART NO.	QTY.	DESCRIPTION
1	1850	1	Spring pin
2	318307	1	Seal, water pump
3	55914	1	Seal, inlet water line
4	1150	4	Flat hd screw, 1/4 - 20 x 1 1/8
5	318615	1	Gear shift rod upper
6	A387060	1	Water pump body w/seal
7	1976	1	Socket hd screw w/lockwasher, 10 - 24 x 1/2
8	318307	1	Seal, driveshaft
9	50065-1	1	Water pump impeller
10	341562	1	Water pump back plate
11	286705	1	Gear shift rod lower
12	318618	1	Seal, gear shift rod lower
13	459721	1	Clutch shift cam
14	A430054	1	Gear housing w/bearings, plug and washer
15	430732	8	Hex cap screw, 1/4 - 20 x 1
16	50109	2	Gear housing plug
17	8077	2	Nyltite washer
18	459265	1	Propeller (Accessory Item)
19	A286094	1	Propeller nut w/cotter pin
20	1846	1	Cotter pin
21	901728	1	Clutch shift pin
22	A318023-3	1	Bevel gear w/bearing
23	459098	1	Propeller shaft
24	A318023-3	1	Bevel gear w/bearing
25	286305	1	Seal, propeller shaft bearing cage
26	2A318298-1	1	Propeller shaft bearing cage w/bearing and seal
27	317717	1	Washer
28	1802	2	Fill hd screw, 1/4 - 20 x 9/16
29	A459101	1	Propeller pin, pack of 3
30	409719	1	Clutch spring
31	318372	1	Pin, clutch guide
32	409521	1	Clutch
33	318266	1	Gear, bevel pinion
34	318128	1	Driveshaft
35	50563	1	Water pump impeller drive pin

# Fuel Tank and Line



ILLUS. NO.	PART NO.	QTY.	DESCRIPTION
1	213342	1	Seal, fuel line coupler
2	213735	1	Seal, fuel line coupler
3	197787-2	1	Fuel line coupler
4	298788	4	Ferrule
5	A84754-1	1	Fuel line short w/ferrules
6	S387766-1	1	Prime bulb
7	A197752-1	1	Fuel line long w/clamp and ferrule
8	S459755	1	Fuel tank adapter
9	459034-1	1	Fuel tank
10	66252	1	Gasket
11	S459251	1	Fuel tank cap w/vent screw
	S409752	1	Fuel line complete



# Specifications

SEPOWER -- 6 B. I. A. Certified Brake H. P. at 5000 R. P. M.

NE -- Two-Cycle, Twin Cylinder, Alternate Firing.

END AND STROKE -- 1 7/8" x 1 5/8".

DISPLACEMENT -- 8.99 Cubic Inches.

CARBURETOR -- Float Feed.

CONNECTING ROD -- Die Cast Aluminum - Steel Liners With Needle Bearings at Crankshaft.

RECOMMENDED OPERATING RANGE -- 4500-5500 R. P. M.

FUEL TANK -- Separate Steel Tank.

PROPELLER SHAFT AND DRIVESHAFT -- Stainless Steel, Hardened, Ground and Polished.

PROPELLER -- Aluminum Alloy - 7" Diameter, 4 3/4" Pitch, Right Hand Rotation.

COOLING -- Water Cooled - Positive Displacement Type Water Pump.

CRANKSHAFT -- Forged Nickel Steel. Ball Bearings at Upper Main. Full Complement Needle Rollers at Center Main.

TRANSOM HEIGHT -- 15".

# Lubrication Chart

<u>PART NAME</u>	<u>TYPE OF LUBRICANT</u>	<u>HOW OFTEN</u>
Pinion Gear	SAE 30 Motor Oil	If Starter Operation Becomes Sluggish
Spool Bearings	SAE 30 Motor Oil	If Starter Operation Becomes Sluggish
Throttle Cam Follower	SAE 30 Motor Oil	Twice Each Season, Oftener if Required
Throttle Control Shaft Bearings	SAE 30 Motor Oil	Twice Each Season, Oftener if Required
Adjusting Screws	SAE 30 Motor Oil	Twice Each Season, Oftener if Required
Bracket Pivot Bolt	SAE 30 Motor Oil	Twice Each Season, Oftener if Required
Housing	Wards Sea King Hypoid Outboard Gear Oil	Every 30 Hours, Oftener if Required
Line Coupler Release Ring	SAE 30 Motor Oil	Twice Each Season, Oftener if Required

GREASE FITTINGS -- Grease Fittings Are Provided at Critical Points Where Bearing Surfaces Are Not Exposed Externally. Using an Autom Type Grease Gun and Lubricant, Grease Twice Each Season or Oftener if Required.

# Special Adjustments

VALVE POINT GAP -- .020".

VALVE PLUG -- Champion L-4-J, Gap .030".

STEERING TENSION -- Steering Tension Can Be Adjusted by Turning the One (1) Steering Friction Adjusting Screw, Illustration 13, Page 13, in the Direction Required.

POINT OF THROTTLE OPENING -- Set the Position of the Throttle Cam Follower Roller, Illustration 48, Page So That the Throttle Shutter in the Carburetor Will Be CLOSED and All Slack REMOVED from the Linkage When the Throttle Cam Follower is on the Throttle Pick Up Point Mark on the Throttle Cam Plate.

FLYWHEEL NUT -- Torque to 40-50 Foot Pounds.